

Pokini Docking Station Specification

Version 1

Setups

Pokini Docking Station is available in two setups:

1. Charging-only Dock
2. Active Dock

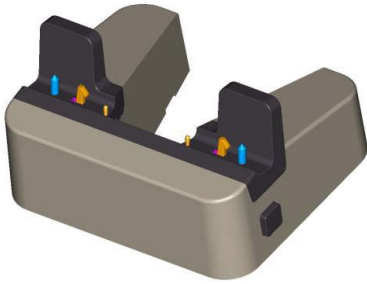


Figure 1: Charging-only Dock



Figure 2: Active Dock

Features

Charging-only Dock	Active Dock
<p>Fast charging via device contact pads</p> <ul style="list-style-type: none"> No need to open connector doors when device placed to dock Up to 3A battery charge current support 24W power supply for device <p>Locking mechanism to hold the device in place</p> <ul style="list-style-type: none"> Steel guiding pins for device alignment Metal hooks for locking 	<p>Fast charging</p> <ul style="list-style-type: none"> Up to 3A charge current support 24W power supply for device <p>HDMI external display interface</p> <ul style="list-style-type: none"> Connector HDMI Type-A HDMI rev 1.4a 1920 x 1080p @ 60Hz <p>3 x USB 3.0</p> <ul style="list-style-type: none"> Connectors standard A-type Current capability of 900mA from all ports Separate over current protection for each port <p>Ethernet</p> <ul style="list-style-type: none"> Connector RJ-45 standard LAN connector 10 / 100 /1000 Ethernet support Activity indicator LED's at the connector <p>Dock detection</p> <ul style="list-style-type: none"> GPIO signal to indicate docking status for device Dock power save mode when device is not docked or is shut down <p>Single wire interface (option)</p> <ul style="list-style-type: none"> Simple interface for dock-device communication Use cases: Charging level indication, Device identification, Dock control

General Specification

Electrical specification

- DC input :60W (12-16V)
- ESD air discharge 8kV, contact discharge 4kV
- EMC EN301489

Environment specification

- Operational temperature : 0°C to 50°C
- Humidity : 10 to 90 %, non-condensating